



# NEW JERSEY VACCINES FOR CHILDREN (NJ VFC) PROGRAM

[VFC@doh.nj.gov](mailto:VFC@doh.nj.gov)  
Phone: 609-826-4862  
Fax: 609-826-4868

## GETTING TO KNOW YOUR DATA LOGGERS

As of January 1, 2018, the Centers for Disease Control and Prevention (CDC) requires that VFC providers must use a digital data logger (DDL) with a continuous monitoring capability and a current and valid Certificate of Calibration Testing (also known as a Report of Calibration) in each unit storing public vaccines. DDLs must be used during routine, on-site vaccine storage and mass vaccination clinics. A DDL must also be used whenever vaccines are transported so that you can document that the cold chain was maintained. **A DDL must be placed in each vaccine transport container whenever vaccines are being relocated to another site.** Be sure to have enough DDLs on hand to transport vaccines in an emergency.

There are many DDLs on the market. You can purchase a DDL that best meets your needs. Be sure that any DDL that you purchase meets CDC's minimum requirements. Required features include:

- Detachable probe that best reflects vaccine temperatures (e.g., probe buffered in glycol)
- Alarm for out-of-range temperatures
- Low-battery indicator
- Current, minimum, and maximum temperature display
- Recommended uncertainty of +/-0.5°C (+/-1°F)
- Logging interval that can be programmed by the user to measure and record temperatures at least every 30 minutes

Whichever DDL you choose, be sure you read the instructions and are familiar with its use.

### Open the box and retrieve the contents

- Read instruction manual and review training videos, if applicable. Store the certificate of calibration testing in a safe place.

### Place the buffered probe in the center of the storage unit

- Slide the cable through the hinge side of the door or the probe entry portal, depending upon your storage unit design.

### Set up your device following any configuration prompts

- Be sure to configure your DDL to record temperatures at least every 30 minutes.
- Set the alarm settings, date, and time.

### Ensure the device is recording temperatures

#### Practice downloading temperature files

- Save all files for a minimum of 3 years.
- Download files at least weekly, whenever an alarm sounds, and whenever a temperature excursion is suspected (out-of-range current or min/max).

#### Practice reading temperature files

- Be sure you can determine min/max temperatures and out-of-range temperatures.

### KEY DDL SETTINGS

Settings	Refrigerator	Freezer
LO	36°F (2°C)	-58°F (-50°C)
HI	46°F (8°C)	5°F (-15°C)

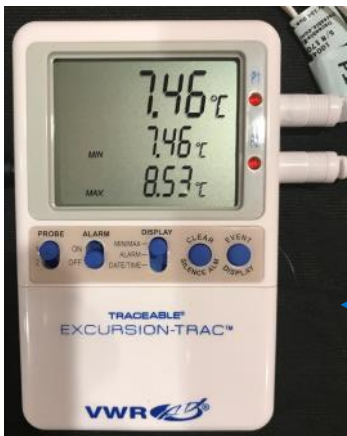
Configure Options	
Date, Time:	Today, 12:00 pm
Temperature Scale	Celsius or Fahrenheit
Record every	30 minutes
Alarm Trigger	
HI (above/equal):	46°F (8°C)
LO (below/equal)	36°F (2°C)



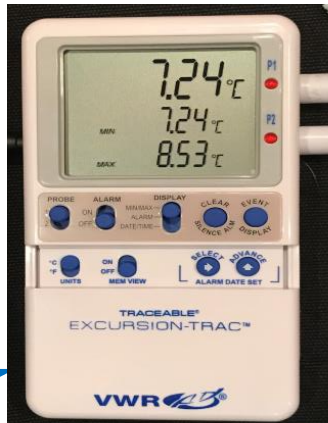
VFC providers must be able to produce DDL files upon request. Paper logs or min/max recordings in NJIIS supplement, but do not replace, the DDL file requirement. The VFC program understands that malfunctions/disasters occur and will always evaluate situations on a case-by-case basis. However, in general, providers who cannot produce DDL files will be assumed to not have monitored temperatures for the period of time in question. All vaccines in the storage unit and administered may be considered non-viable for the period of time in question and providers may be held responsible for replacement and revaccination.

~Continued on next page~

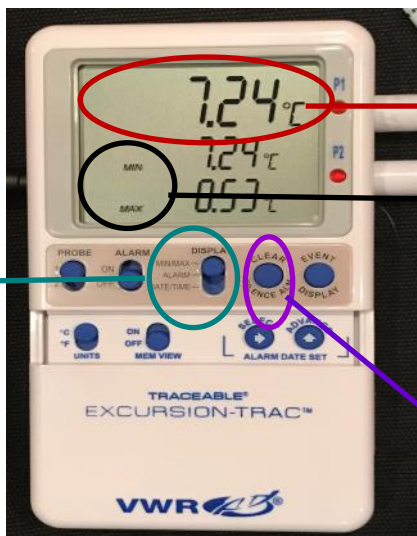
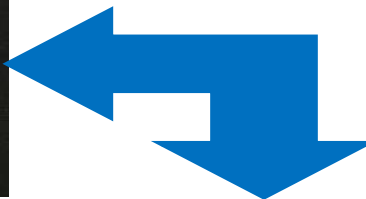
# ANATOMY OF YOUR DIGITAL DATA LOGGER



DEVICE IS COVERED



SLIDE DOWN FOR ADDITIONAL FEATURES



CURRENT TEMPERATURE

MINIMUM/MAXIMUM TEMPERATURES ARE TO BE RECORDED DAILY

DISPLAY SWITCHED TO SHOW MINIMUM/MAXIMUM TEMPERATURES


BE SURE TO CLEAR THE MIN/MAX TEMPERATURES AFTER RECORDING



LOW/HIGH ALARM SETTINGS

DISPLAY SWITCHED TO SHOW ALARM SETTINGS

THE ALARM SHOULD ALWAYS BE SWITCHED TO THE "ON" SETTING

 Practices often mistakenly record alarm settings instead of minimum/maximum temperatures on their paper logs and in NJIIS.

Double check to make sure you record the correct temperatures!

**NOTE:** The functionality and display of each type of DDL differs. Please refer to the instruction manual for your device.