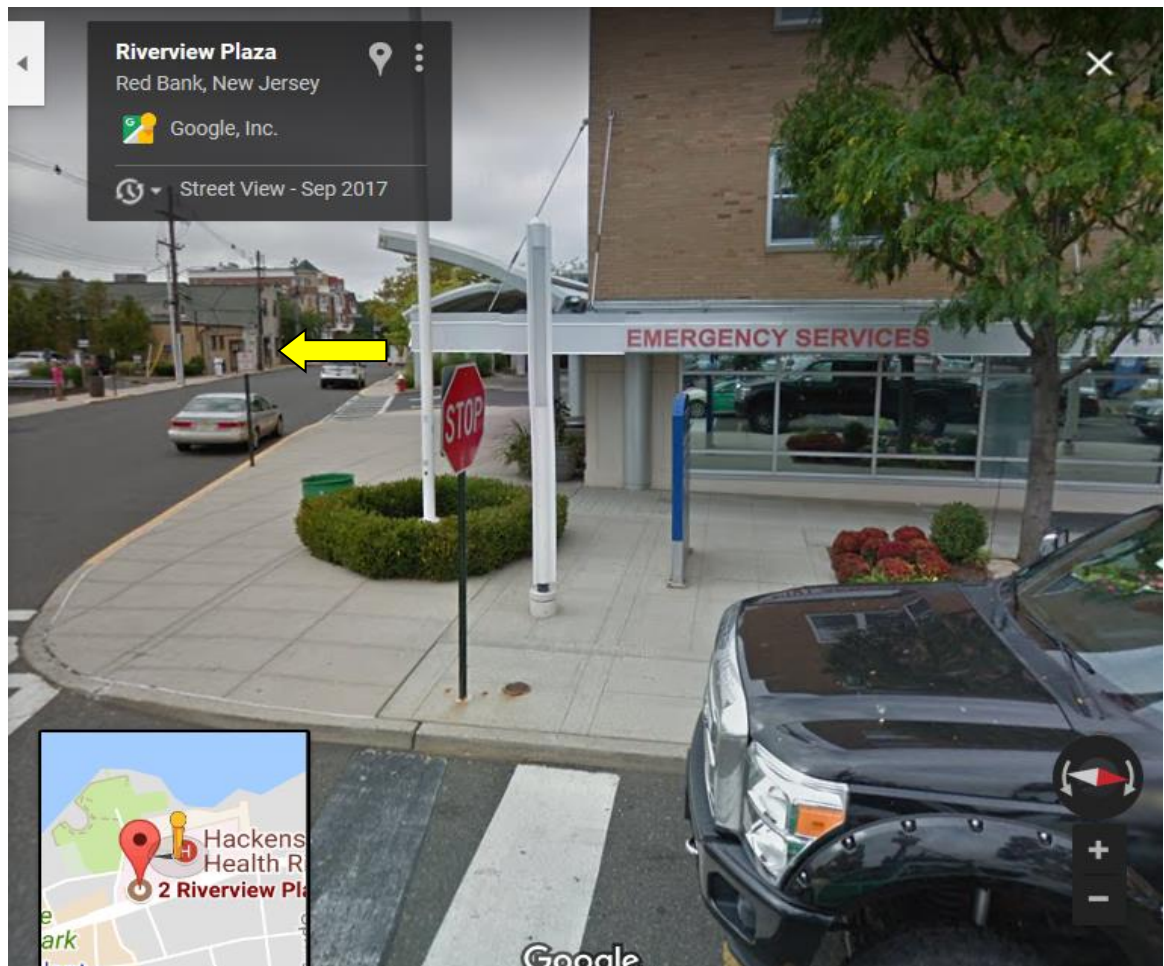


# NJIS

NEW JERSEY  
IMMUNIZATION INFORMATION SYSTEM



## **Riverview Medical Center, Riverview Plaza, Red Bank Computer Training Facility (Yellow arrow indicates location)**

With the parking lot to your back, the Emergency department to your right side, the Computer Training Facility (**Brown Building**) is located across from the Ambulance Drop off and next door to Red Bank Radiology (Blue Building on the corner).

I will have a sign posted outside of the building on the blue No Smoking Sign for NJIIS training.

**Hospital Valet parking is free.**

Patricia Kaiser, NJIIS Trainer

**Riverview Medical Center the Computer Training Facility is located across the street from the Emergency Department on Riverview Plaza**

**When walking towards the ER from the Hospital Parking Lot the Training Facility is the Brown building on the left side of the street.**

### **From the North**

Take the Garden State Parkway South to Exit 109, the Red Bank Exit. Follow Newman Springs Road East to Broad St. in Red Bank. Turn Left onto Broad Street and follow to end (East Front Street). Turn Right onto East Front Street and follow approximately 1/4 mile. The main entrance for Riverview Medical Center will be on the left.

Take Route 35 South over bridge into Red Bank. Continue on Route 35 South, following Hospital signs, towards East Front Street (road bears left, right, left and left again. Turn right onto East Front Street and follow approximately 1/2 mile. The main entrance for Riverview Medical Center will be on the left.

### **From the South**

Take the Garden State Parkway North to Exit 109, the Red Bank Exit. Follow Newman Springs Road East to Broad St. in Red Bank. Turn Left onto Broad Street and follow to end (East Front Street). Turn Right onto East Front Street and follow approximately 1/4 mile. The main entrance for Riverview Medical Center will be on the left.

Take Route 35 North to Broad Street in Red Bank and follow to the end (East Front Street). Turn Right onto East Front Street and follow approximately 1/4 mile. The main entrance for Riverview Medical Center will be on the left.

### **From the East**

From Route 36 in Sea Bright, turn onto Rumson Rd. Follow Rumson Rd. West to Prospect Ave. in Red Bank. Turn right onto Prospect Ave. and follow to the end (East Front Street). Turn Left onto East Front Street and follow for 1/4 mile. The parking entrance for Riverview Medical Center will be on the right.

### **From the West**

Follow Newman Springs Road East to Broad St. in Red Bank. Turn Left onto Broad Street and follow to end (East Front Street). Turn Right onto East Front Street and follow approximately 1/4 mile. The parking entrance for Riverview Medical Center will be on the left.