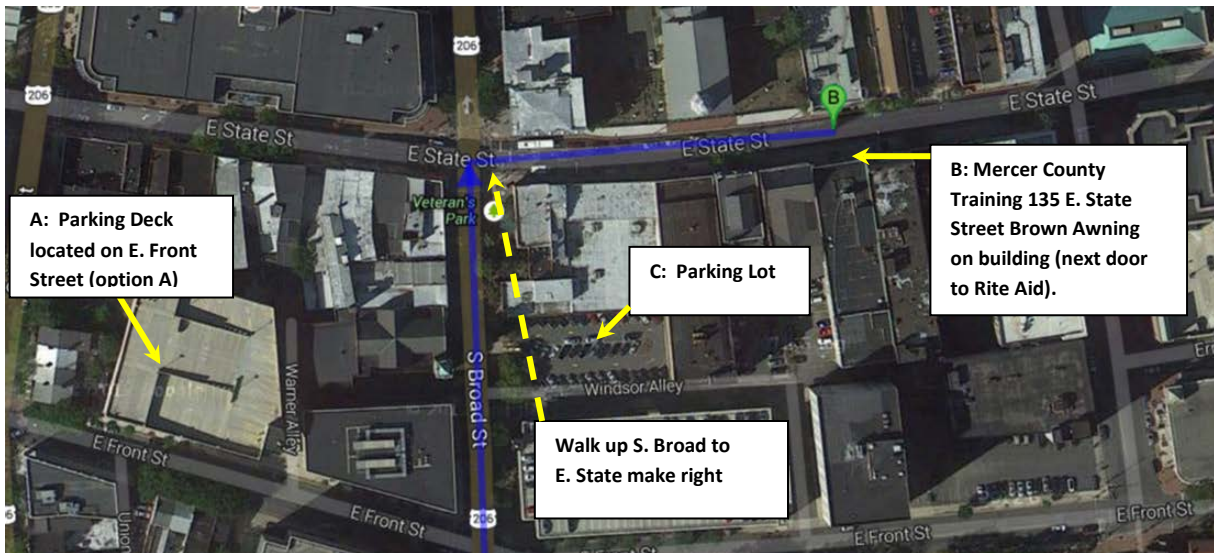
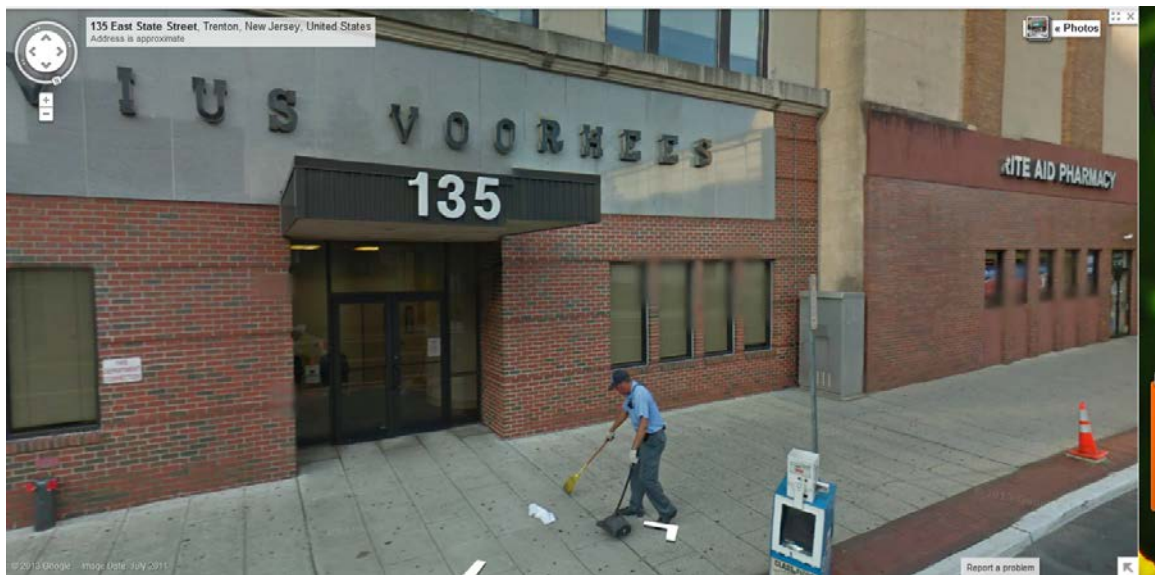


NJIIS Training Site Mercer County
New Jersey Department of Health and Senior Services
135 East State Street, Basement Training Room
Trenton

For direct route please use MapQuest or Google Maps from your location
The building is right next door to the Rite Aid as you walk down East State Street



Street View of Building (walking from the corner of South Broad & East State Street)



NJIIS Training Site Mercer County
New Jersey Department of Health and Senior Services
135 East State Street, Basement Training Room

Patricia Kaiser CJFHC, NJIIS Trainer
pkaiser@cjfhc.org

Trenton

Parking Options:

Parking Deck located on East Front Street (A) or Parking Lot (C) on South Broad Street.

From Highway 195:

Take Highway 195 West to Rt. 29 North. Merge onto NJ-29 North via Trenton

Make a right onto South Warren Street and right again onto Ferry Street.

Make left onto South Broad. At **East Front Street** make a left.

Park in the parking deck on right (you will need to take a ticket and pay at exit)

Walking Directions from Parking Deck:

Come out of parking deck and make left to walk towards South Broad. At corner go left and at next corner go right. Walk $\frac{3}{4}$ of the way down the right side of the block and enter at 135 East State Street. The Building has a Brown Metal Awning. Enter two sets of Glass Doors and sign in with Security.

From Points in Trenton / Mercer County:

Google or MapQuest the directions from your location as there are so many different ways to get to 135 East State Street.